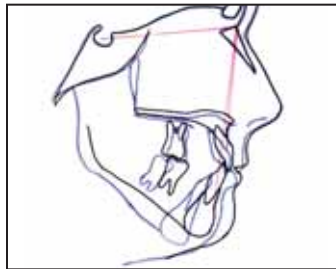


The Cover

Various contemporary mini-screws are depicted on this month's cover. (See p. 527 for a list of manufacturers.)



504 Differential Friction



508 Splint Guides



528 Expansion Capacity

DEPARTMENTS

The Editor's Corner . . . 489
 Continuing Education . . 533
 Book Reviews 535
 Classified 536
 Product News 537
 Index of Advertisers . . . 539

Differential Friction in Treatment with Preadjusted Fixed Appliances

LORENZO FRANCHI, DDS, PHD
 TIZIANO BACCETTI, DDS, PHD
 ARTURO FORTINI, MD, DDS
 MASSIMO LUPOLI, MD, DDS
 Differential friction is illustrated in various cases.

504

Occlusal Splint Guides for Presurgical Orthodontic Treatment

GIAMPIETRO FARRONATO, MD, DDS
 CINZIA MASPERO, MD, DDS
 LUCIA GIANNINI, DDS
 DAVIDE FARRONATO, DDS, PHD
 These thermoformed splints indicate when the desired presurgical tooth positions have been achieved.

508

2008 Survey of AAO Members on Miniscrew Usage

PETER H. BUSCHANG, PHD
 ROBERTO CARRILLO, DDS, MS
 BRIAN OZENBAUGH, DDS
 P. EMILE ROSSOUW, BCHD, MCHD, PHD
 A worldwide poll covers current practices in skeletal anchorage.

513

Who Places Miniscrews? An Informal JCO Survey

WENDY L. OSTERMAN
 Orthodontists respond to questions about miniscrew insertion and usage.

519

A Practical Alternative for Increasing the Capacity of a Maxillary Expansion Screw

JOSÉ RINO NETO, DDS, MS, PHD
 ANNELISE NAZARETH CUNHA RIBEIRO, DDS
 LEILE STAVROS BASSUKOS, DDS
 JOÃO BATISTA DE PAIVA, DDS, MS, PHD
 This chairside method avoids interruption of treatment.

528

**CLINICAL AID
 A Grid for Guiding Miniscrew Placement**

K. BHARANI KUMAR REDDY, MDS
 M. PAVAN KUMAR, MDS
 M. NAGENDRA KUMAR, MDS
 A simple mesh grid improves insertion accuracy.

531

The opinions expressed in the *Journal of Clinical Orthodontics* are those of the writers and do not necessarily reflect the opinions and policies of JCO. Copyright © 2008 JCO, Inc. JCO (USPS 802-120, ISSN 0022-3875) is published monthly for \$220 per year (U.S. individual rate) by JCO, Inc., 1828 Pearl St., Boulder, CO 80302-5519. Periodicals postage paid at Boulder, CO, and additional mailing office. POSTMASTER: Send address changes to JCO, 1828 Pearl St., Boulder, CO 80302-5519. Phone: (303) 443-1720; e-mail: info@jco-online.com.